



# The Hawthorne HOTLINE

THE OFFICIAL NEWSLETTER OF THE HAWTHORNE CHAMBER OF COMMERCE

May 2006

## 32nd Annual Medal of Valor

### Mission of the Hawthorne Chamber of Commerce

Act as a spokesperson for the business and professional community and translate into action the group thinking of its members

Render specific services to its members and to the community as a whole

All businesses within and around the City of Hawthorne are invited to join the Chamber and participate in its various community events

### Location and Hours of Operation

4444 W. El Segundo Blvd.  
Hawthorne  
310.676.1163  
www.hawthorne-chamber.com  
info@hawthorne-chamber.com

Monday and Wednesday  
9:30 am—2:30 pm  
Friday  
10 am—3 pm

All Chamber members are welcome to attend the General Board meetings held the first Wednesday of every month, 8 am at the Chamber office.

*\*Taken from the Daily Breeze, SB to Honor its Heros in Uniform, April 26, 2006, by Larry Altman*

Ten police officers and three firefighters were recognized at the April 26, 2006 annual awards ceremony at the Torrance Marriott. About 600 people attended the South Bay chamber of commerce luncheon, which honors police officers and firefighters for heroic acts in 2005, and for outstanding longtime service.

Much of the room was filled by police officers and firefighters, their colleagues, families and friends. The rest of the tables were seated by community members.

Selected by a committee of community representatives, the 32nd Medals of Valor honored officers who risked their lives to help others, Distinguished Service Awards recognized police officers and firefighters who went beyond the call of duty, and Sustained Superiority Awards bestowed thanks on officers with outstanding achievements.

- Inglewood police officers Ruben Chavez and Roger Zeller risked their lives by crawling into a burning car to rescue a woman trapped inside.
- Inglewood police officer Christopher Kearney came face to face with a gang member holding an assault rifle and shot him to death when he feared the man might fire on his fellow officers.
- Manhattan Beach police officer Matt Sabosky reached into a Jeep engulfed in flames on the San Diego (405) Freeway in Torrance to help an injured man, then pushed the burning vehicle off his body.
- Palos Verdes Estates police officer Steve LeBeau jumped through the window of a car perched at the edge of a 200-foot cliff, shifted the vehicle into park and grabbed the keys to prevent a suicidal man from driving over.
- Redondo Beach firefighters Kevin Coffelt and Chad Smith entered a burning home filled with smoke to rescue a woman and, despite malfunctioning search equipment, found her.
- El Segundo police Sgt. Al Graham, an officer since 1977, was honored for working in a variety of assignments, including on the anti-terrorism task force, the South Bay Regional Driving Under the Influence Task Force, the city safety committee and special events coordinator, and for serving as a mentor and example for younger officers.
- Inglewood police Detective Steve Tyrrell received an award for his long career as an investigator working on homicides, sex crimes, property crimes, robberies, assaults and fraud.
- Torrance fire Division Chief Don Thompson received an award for years of service as a paramedic, captain and administrator, and for modernizing the department's computer systems and Web sites.
- Gardena police Sgt. Steven Swain will be honored for his years of investigative work, including fighting narcotics organizations and local street gangs.

*The Hawthorne Chamber commends  
and is proud of  
all 2006 Medal of Valor Recipients!*

**May 18th Mixer at Silver Scissors!  
14333 Inglewood Avenue, Hawthorne  
Food, Drawings, Networking, Be There!**

## President's Message

Center Stage II - Act IX

Presidential Duties

President Harris is busy taking care of some very important Chamber business...The President's Message will be back in June in time for his last official address!



## Hawthorne Chamber Board Members

### Board of Directors

**President** Don Harris, Farmers Insurance Group

**Treasurer** Larry Franklin, Commercial Capital Bank

**President Elect** Pat Feldman-Donaldson, Abacus Security Services

### Committees

**Communications** Candy Cargill-Fuller, Behavioral Health Services

**Economic Development** Don Harris, Farmers Insurance Group

**Government Affairs** Terri Owens, South Bay Workforce Investment Board

**Member Services/Women in Business** Pat Feldman-Donaldson, Abacus Security Services

**Special Events** Nelson Rios, Advanced Party Rentals

### Elected Board Members

Rev. Al Wise, Del Aire Assembly of God Church

Betty Patterson, LV Travel & Tours

Bill Salfity, G & S Printing

Christian Solomon, United Janitorial Services

Joseph Simone, Menace Studios

Meg Roi, California Crusader News

Mike Bell, Bell Event Services

Nelson Rios, Advanced Party Rentals

Pat Feldman-Donaldson, Abacus Security Services

Cliff Strand, Gold's Gym

### At Large Directors

Candy Cargill-Fuller, Behavioral Health Services

Jeff Lyman, South Bay Ford

Randy Jacobs, Vought Aircraft Industries Inc.

Lily Craig, Chevron Products Company

Shelley Rose, Hawthorne School District

Steve Bradford, Southern California Edison

Terri Owens, South Bay Workforce Investment Board

### Staff

Administrative Assistant  
 Sherice Fernandez

**Contact Any Board Member And  
 Get Involved Today!**

# Yesteryear

If you are old enough to remember when about all cars had stick shifts maybe you will remember the ignition switch was on the dash board and not on the steering column. Also the dimmer switch for the head lights was on the floor next to your left foot. Remember rumble seats? Running boards, spark control, manual chokes and the emergency brake on the floor? Also we didn't have turn signals that flash in the direction you wanted to turn, oh no, we had to use hand signals out the window rain or shine. Gee look what the kids of today are missing.

In the home we had real ice boxes and the ice man would come along each day and sell us a 25 pound or more piece of ice that was put in the top of the ice box with a pan under it to catch the water after the ice melted. If it was your chore to empty the pan before it overflowed and you didn't do it the kitchen floor would have water all over it and your mother wasn't too happy about that. If you were lucky enough to have a refrigerator there were no plastic ice trays, there were real metal trays with handles you pulled up to get the ice

cubes out.

In school we didn't have computers with printers, we had mimeograph machines where we would type out on a special mask and then rap it around the machine that had an ink blanket that would allow the ink to come through the mask onto paper. Oh yes it was messy, but we didn't know any better. All school bulletins were printed this way.

The only fast food we had was a peanut butter and jelly sandwich which we had to make ourselves. Our mothers didn't have steam irons then either. She would use an old bottle with a top on it and punch holes in the top, fill the bottle with water, lay the clothes out and sprinkle them to get them damp. It took longer but they were done very nicely. All clothes had to be ironed then for there was no wrinkle free material.

In those days grandma would put a freshly baked apple pie on the window sill to cool; now granddaughter puts the pie on the window sill to thaw.

Later on we had drive-in movies

where we would take our dates and would buy popcorn in the snack bar. The way most of us made any money was with a paper route which we had in the early morning or in the afternoon. We might have 100 or 150 customers. The papers were seven cents, and we would make two cents, that is if our customers would pay us. Oh yes we had to do our own collecting each month, so as you can see there wasn't a whole lot of money in that but that's about all we had.

Some of the kids were lucky and got to be ushers in the movie houses or the best job was as a soda jerk in one of the drug stores where that lucky person would make malts, sodas and dish up ice cream. Jobs were tough to come by then so if you had a job you did your best to keep it for that little money went into the family coffers. Maybe you could keep out enough to go to the movies on Saturday afternoon which cost ten cents. You took your own candy or snacks in with you for there were no snack bars then in the theaters.

That about wraps it up for now. Remember those were "The Good Old Days." Till next time, Walt

## Upcoming Events

### May Events

- 5/3 Board of Directors Mtg, 8 am, Chamber Office
- 5/16 Women in Business Mtg, Cherise Harris, abovedove2003@yahoo.com
- 5/18 May Mixer, Silver Scissors, 5:30 pm
- 5/20 Home Depot Child Safety Awareness Day

### June Events

- 6/2 Chamber Installation, 5:30 pm
- 6/7 Board of Directors Mtg, 8 am, Chamber Office
- 6/15 June Mixer-- \*\*Cancelled!\*\*
- 6/20 Women in Business Mtg, Cherise Harris, abovedove2003@yahoo.com

### July Events

- 7/5 Board of Directors Mtg, 8 am, Chamber Office
- 7/18 Women in Business Mtg, Cherise Harris, abovedove2003@yahoo.com

**List your community or business events here. Contact Candy Cargill-Fuller at [candy@bhs-inc.org](mailto:candy@bhs-inc.org)**

# THE HAWTHORNE CHAMBER OF COMMERCE PRESENTS THE 36TH ANNUAL INSTALLATION OF OFFICERS AND CIVIC AWARDS PRESENTATION



## Honoring Great Women in History



**FRIDAY JUNE 2, 2006**

Hawthorne Memorial Center  
3901 West El Segundo Boulevard  
Hawthorne, California

Social Hour at 5:30 pm · Dinner and Program at 6:30 pm

### \$30 Individual Seats

**\$300 Table Sponsor:** includes acknowledgement in program and table for 10

**\$500 Event Sponsor:** includes acknowledgement in program, table for 10 and logo on event banner

**\$1000 Presenting Sponsor:** includes acknowledgement in program, table for 10, logo on event banner and plaque presented at event. Acknowledged as Presenting Sponsor in all event publicity

Company Name \_\_\_\_\_ Contact \_\_\_\_\_

Address \_\_\_\_\_

City \_\_\_\_\_ State \_\_\_\_\_ Zip code \_\_\_\_\_

Email \_\_\_\_\_ Phone \_\_\_\_\_

Individual Seat(s) \$30 each \_\_\_\_\_  
Table Sponsor \_\_\_\_\_  
Event Sponsor \_\_\_\_\_  
Presenting Sponsor \_\_\_\_\_  
Amount Enclosed \_\_\_\_\_

\*Make checks payable to the Hawthorne Chamber of Commerce, 4444 El Segundo Boulevard, Hawthorne, CA 90250  
\*For credit card purchases, contact the chamber office

For More Information, Contact The Chamber At 310-676-1163 Or [info@hawthorne-chamber.com](mailto:info@hawthorne-chamber.com)



**YOUR CHAMBER- TAKING CARE OF BUSINESS!**

## Government Affairs by Terry Owens

### New California Laws at a Glance

#### HOMEOWNERS ASSOCIATIONS:

Homeowners associations must use secret ballots for elections in common-interest developments.

\$ The associations will not be able to foreclose on property to collect delinquent assessments that are less than \$1,800 and less than 12 months late.

\$ And they must make all records, not just accounting records and meeting minutes, available to members.

**HUMAN TRAFFICKING:** Makes human trafficking a crime and creates a civil cause of action for victims of human trafficking. Also requires local law enforcement to track incidents of trafficking.

**INHERITANCE ADVANCE:** Lenders who offer cash advances to consumers whose inheritance is tied up in probate will have to disclose all fees and get court approval for the transactions.

**INTERNET HUNTING:** Prohibits use of Internet sites designed to allow people to shoot at animals via a Web link.

**NEW DRIVERS:** Drivers who have had

their provisional licenses for less than six months cannot drive between 11 p.m. and 5 a.m. These drivers also cannot have passengers under the age of 20 unless they are accompanied by a licensed driver who is at least 25 years old.

**OFF-ROAD VEHICLES:** Penalties increase for off-road vehicle operators convicted of trespassing in wilderness areas.

**PAPARAZZI:** Paparazzi who commit assaults in their pursuit of celebrity photographs could be hit with hefty civil penalties.

**PHISHING:** Makes it illegal to solicit or request someone's identifying information by falsely representing that the information is being requested by a business, a practice known as "phishing."

**PORT SECURITY:** Penalties for trespassers at restricted seaport areas, such as cruise ship terminals, will increase to an amount equal to airport security trespass fines.

**PRISONS:** California prisons will be required to give inmates information on

hepatitis C and offer inmates free, confidential and voluntary testing.

**RECHARGEABLE BATTERIES:** Stores that sell rechargeable batteries must set up recycling or disposal programs for used batteries.

**SCHOOLS:** Public schools will begin reporting the average per-pupil spending and teachers' salaries at individual schools, instead of showing those figures for the district as a whole.

\$ County superintendents will have more oversight over charter schools, including the authority to audit school finances and management.

- Extends the ban on the sale of soda on public school campuses to high schools. Previously, the law only applied to middle and elementary schools. The law also sets nutrition standards for food served and sold in K-12 public schools.

- Bars schools from using experimental pesticides that have not been registered with and tested by the state.

**SEX OFFENDERS:** High-risk sex offenders cannot live within a half mile of public or private K-12 schools. Previously, the boundary was one-quarter mile from K-8

## Member Information

Frank Ponce is a very hands-on sort of person. You can often find Frank walking down W. 142nd Street with a big smile on his face and talking to landlords, managers, and tenants. He has been instrumental in uniting them to work together in fighting crime in Hawthorne. Frank set up a site located at:

<http://finance.groups.yahoo.com/group/west142ndstreetclub/>

This is a place where other landlords and managers exchange ideas on a message board. Everyone is welcome to pop in and join.

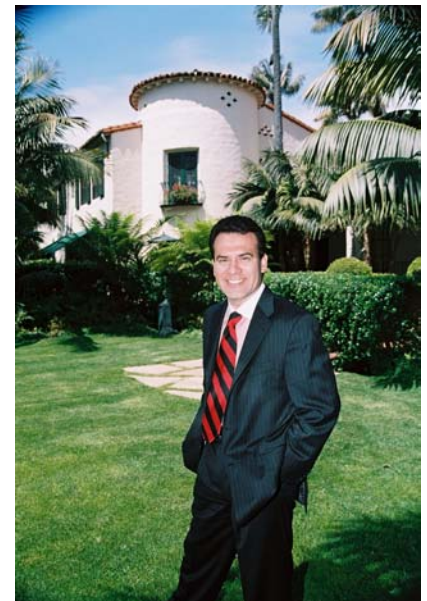
Frank helps other landlords/managers with tenant issues, buying/selling/exchanging, and day-to-day questions. He is proactive in teach-

ing other landlords "how to rent right" and avoid problems later.

Frank is also an apartment building owner in the City of Hawthorne as well as a Real Estate agent for Coldwell Banker Commercial NRT. He is fluent in Spanish and has made it his business to try to get to know as many landlords in Hawthorne as possible.

Frank began helping manage properties at a very young age. When he was still in junior high school he was already helping his father manage his motels near Pasadena. He has been in the apartment business since 1983. He also has a very strong financial background that goes back 25 years. If you are thinking of sell-

ing, buying, and/or exchanging your apartment or commercial property, then Frank Ponce is the person to call. He can always be reached at (310) 503-4158.



## Advertise Your Businesses Here!

**THE HAWTHORNE HOTLINE** is mailed and emailed directly to 230+ members and published on the chamber's website at [www.hawthorne-chamber.com](http://www.hawthorne-chamber.com).

### Advertising Rates

Ad Size	One Time	3x or More
Business Card	\$ 25	\$ 20
Quarter Page	\$ 45	\$ 40
Half Page	\$ 90	\$ 85
Full Page	\$ 180	\$ 170

### Newsletter Insert Rates (Advertiser Provides Copies)

Members	\$ 35	Non-members	\$ 50
---------	-------	-------------	-------

*Thanks to Behavioral Health Services for publishing our newsletter.*

**Real Estate  
Licensing School  
\$249.00  
Phone (310) 978-2121**

- State Approved School
- Real Estate Principles & Exam Preparation
- Latest Updates
- 6 week course

**14005 Hawthorne Blvd. Hawthorne, CA 90250**

# Your Hawthorne Chamber Taking Care of Business!

# Advertise Your Businesses Here!



**G & S  
Printing**  
*"Communicating on Paper"*

**Bill Salfity**

13022 Hawthorne Blvd.  
Hawthorne, CA 90250


Tel. (310) 679-6058  
Fax (310) 679-1711  
info@gspainting.com

FOREIGN & DOMESTIC  
**CERISE**  
**AUTO BODY**

[www.ceriseautobody.com](http://www.ceriseautobody.com)

---

**13020 CERISE AVENUE • HAWTHORNE • CALIFORNIA • 90250**  
**TELEPHONE (310) 219-0900 • FACSIMILE (310) 676-2202**  
**E-MAIL: [service@ceriseautobody.com](mailto:service@ceriseautobody.com)**



**ABACUS Security Services, Inc.**  
*"A security company you can count on."*

**Patricia Feldman-Donaldson**  
*Senior Vice President*

12509 Crenshaw Blvd.  
Hawthorne, CA 90250

Tel. (310) 342-7676  
Fax: (310) 342-7666  
Email: [vppatriciafeldman@hotmail.com](mailto:vppatriciafeldman@hotmail.com)

**Guy Hocker**  
[guy@guyhocker.com](mailto:guy@guyhocker.com)




---

**GUY HOCKER, REALTORS**  
4747 W. EL SEGUNDO BLVD.  
HAWTHORNE, CA 90250  
OFFICE: (310) 679-6225      FAX: (310) 676-4921



**Don Harris**  
*Agent*  
*Don Harris Insurance Agency*



**FARMERS**

Auto • Home • Life • Business • Workers' Comp  
13658 Hawthorne Blvd #302  
Hawthorne, CA 90250  
Bus: 310-973-3514 0521504  
Fax: 310-973-0968  
[don@donharrisagency.com](mailto:don@donharrisagency.com)

## Contact The Chamber Office To Get Your Button Today!



### Tell us what you would like to hear!

The HAWTHORNE HOTLINE is the official newsletter of the Hawthorne Chamber of Commerce. It is published monthly, sent by mail, email, and is posted on our website at [www.hawthorne-chamber.com](http://www.hawthorne-chamber.com)

Send requests to:  
Candy Cargill-Fuller at  
[candy@bhs-inc.org](mailto:candy@bhs-inc.org).

The HAWTHORNE HOTLINE welcomes your comments, suggestions and story ideas!



### The Hawthorne **HOTLINE**

---

4444 W. El Segundo Boulevard  
Hawthorne, CA 90250

<http://www.hawthorne-chamber.com>